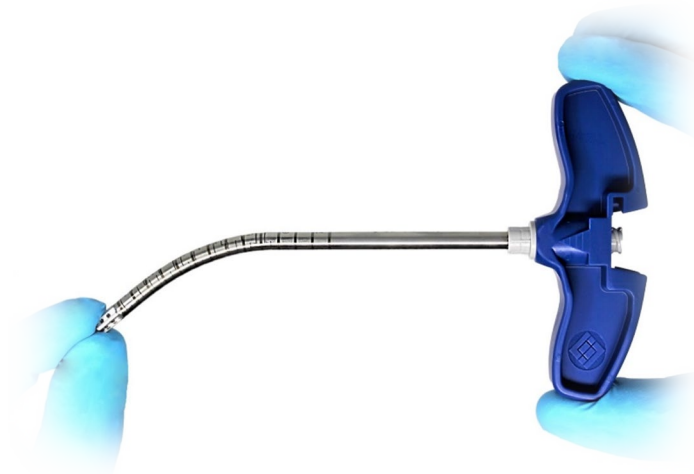


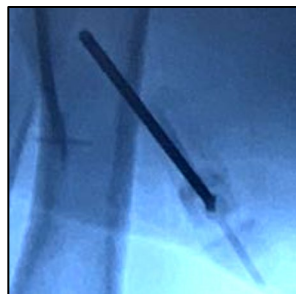
MARXMAN™

A SAFE DEFLECTIVE BONE MARROW ASPIRATION SYSTEM
UTILIZING FLEXMETRIC® TECHNOLOGY



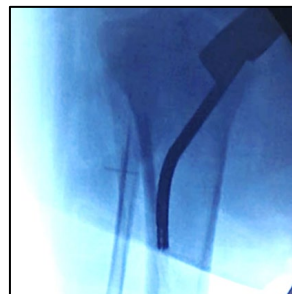
- Safe Deflective Bone Marrow Aspiration System Utilizing FlexMetric® Technology
- FlexMetric® technology (US Pat. 8366559) allows for deflection as the cannula follows the path of least resistance. This maximizes the available bone marrow geography to safely harvest bone marrow by skimming along the inner cortical-cancellous interface to harvest the higher concentration of stem cells and progenitor cells in this location by virtue of its flexible aspirating cannula.
- Patent Pending Technology harvests high concentrations of stem cells and progenitor cells from various levels of this stem cell rich area within the marrow space.
- Eliminates centrifugation and the additional manipulation steps required to achieve the cellular demand necessary for most clinical indications.

Jamshidi™



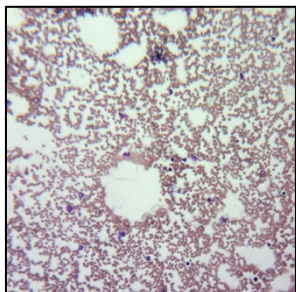
Straight Jamshidi needle perforating through cortex into adjacent tissue.

MARXMAN™



Marrow Marxman Flexible Aspirator hugs inner cortex for enhanced Mesenchymal Stem Cell (MDS) yield.

Sparse number of MSC's harvested with Jamshidi needle (blue stained cells).



Far greater numbers of MSC's harvested with Marrow Marxman.

